

San Clemente Island Scenery (FSX)

San Clemente Island is the most southern island of the eight local California Channel Islands. It lies 55 nautical miles south of Long Beach and 68 nm west of San Diego. The island is approximately 21 nm long and is 4-1/2 nm across at its widest point. It is controlled by the U.S. Navy and is used for missile testing, live-fire training (air and sea) and is used as a SEAL training base.



The main airport (KNUC) is located on the northern end of the island. This scenery has two auxiliary fields (KNU1 and KNU2).

KNUC – San Clemente Island NALF (Frederick Sherman Field)

Location: N33 Deg 1.4' W118 Deg 35.22'

Elevation: 184 Feet

Runway: 5/23, 9,301 X 200' feet

Nav aids: VOR/DME 117.6 Mhz., "San Clemente", ID "NUC", range 190NM
NDB 350 Khz., "San Clemente", ID "NUC", range 75NM
ILS RWY 23, 110.0 Mhz, "INUC", Course 233 Degrees

KNU1 – San Clemente AUX1

Location: N32 Deg 50.36' W118 Deg 24.61'

Elevation: 887 Feet

Runway: 2/20, 2,150 X 110' feet

Nav aid: NDB 351 Khz., "AUX1", ID "NU1", range 37.5NM

KNU2 – San Clemente AUX2

Location: N32 Deg 56.83' W118 Deg 31.85'

Elevation: 893 Feet

Runway: 9/27, 2,550 X 125' feet

Nav aid: NDB 335 Khz., "AUX2", ID "NU2", range 37.5NM

Please take time to read the documentation.

It was fun putting this together. I hope you enjoy flying it.

Copyright 2011 by Bob Hinckley.

AIRPORT DIAGRAM

AFD-5126 [USN]

SAN CLEMENTE ISLAND, CALIFORNIA

OCTOBER 2005
ANNUAL RATE OF CHANGE
0.1 °W

33°02'N

FIELD
ELEV
184

E-28

1

E-28

ELEV

9

118 036'W

11836W

RWY 05-23
PCN 68 R/C/W/T

ELEV

175

FIRE -
STATION

CONTROL
TOWER/
OPERATIONS

PASSENGER
TERMINAL

33°01'N

118035W

SW-3, 07 APR 2011 to 05 MAY 2011

SW-3, 07 APR 2011 to 05 MAY 2011

AIRPORT DIAGRAM

SAN CLEMENTE ISLAND, CALIFORNIA

SAN CLEMENTE ISLAND NALF (FREDERICK SHERMAN FLD) (NUC)

SAN CLEMENTE ISLAND, CALIFORNIA

HI-TACAN RWY 23

TACAN NUC Chan 123	APCH CRS 233°	Rwy Idg TDZE Arpt Elev	9301 184 184
-----------------------	------------------	------------------------------	--------------------

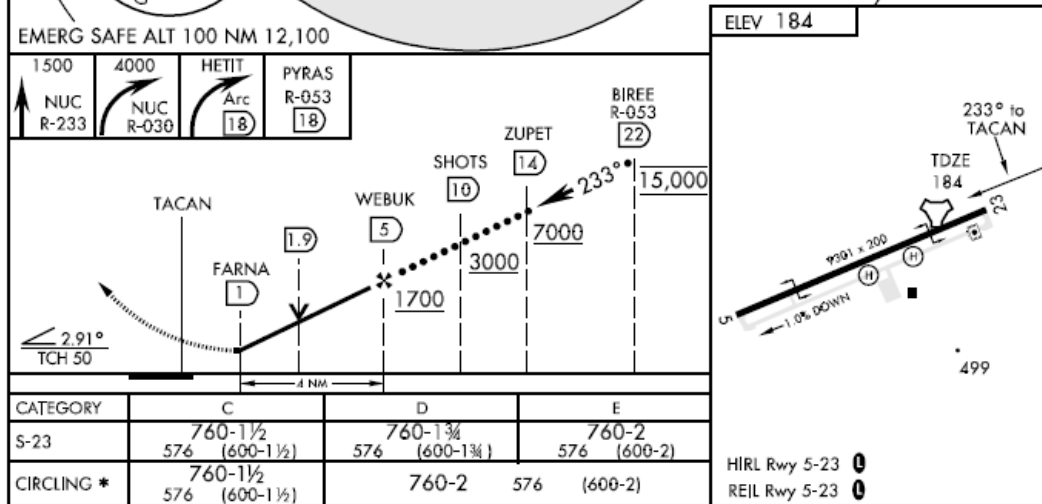
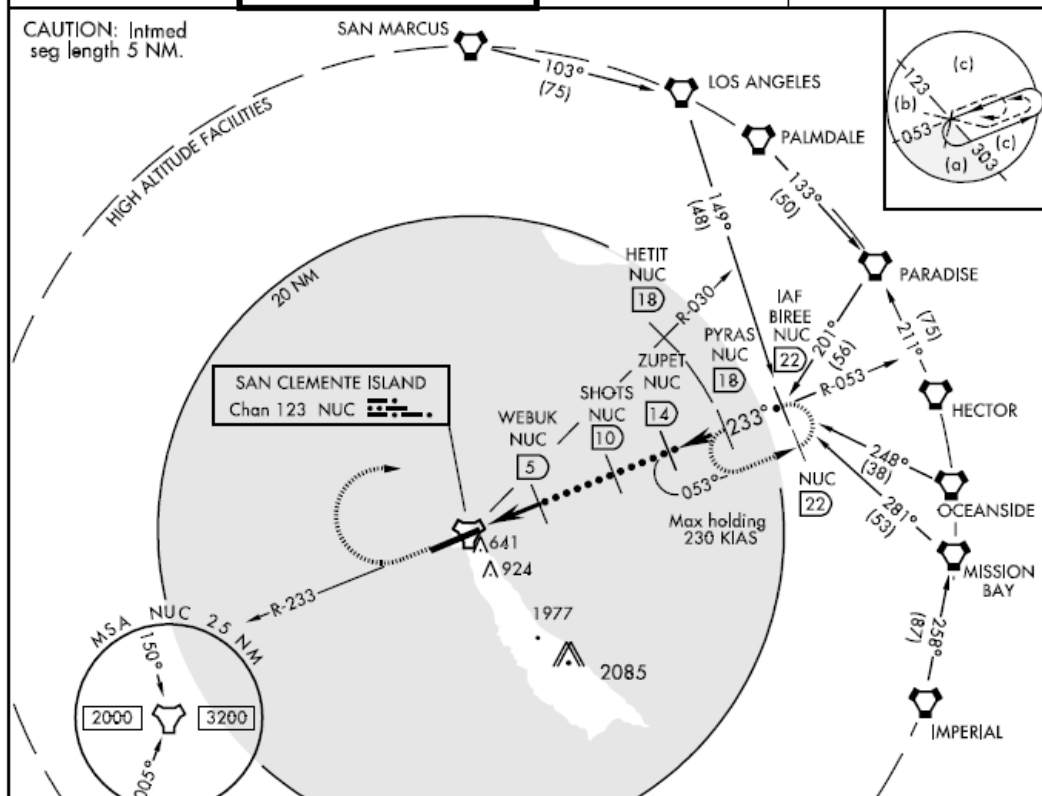
JAL-5126 [USN]

SAN CLEMENTE ISLAND NALF
(FREDERICK SHERMAN FLD) (KNUC)

CAUTION: *Circling not authorized S of Rwy 5-23.
Procedure in uncontrolled airspace.

MISSED APPROACH: Climb to 1500 via NUC TACAN R-233 then climbing right turn to 4000 via NUC R-030 to HETIT. Then arc NE of the NUC TACAN via the 18 DME arc to PYRAS and hold.

ATIS ★ 268.6	SAN CLEMENTE ISLAND TOWER ★ 126.75 278.8	GND CON 0 119.55 251.05	ASR/PAR
-----------------	---	----------------------------	---------



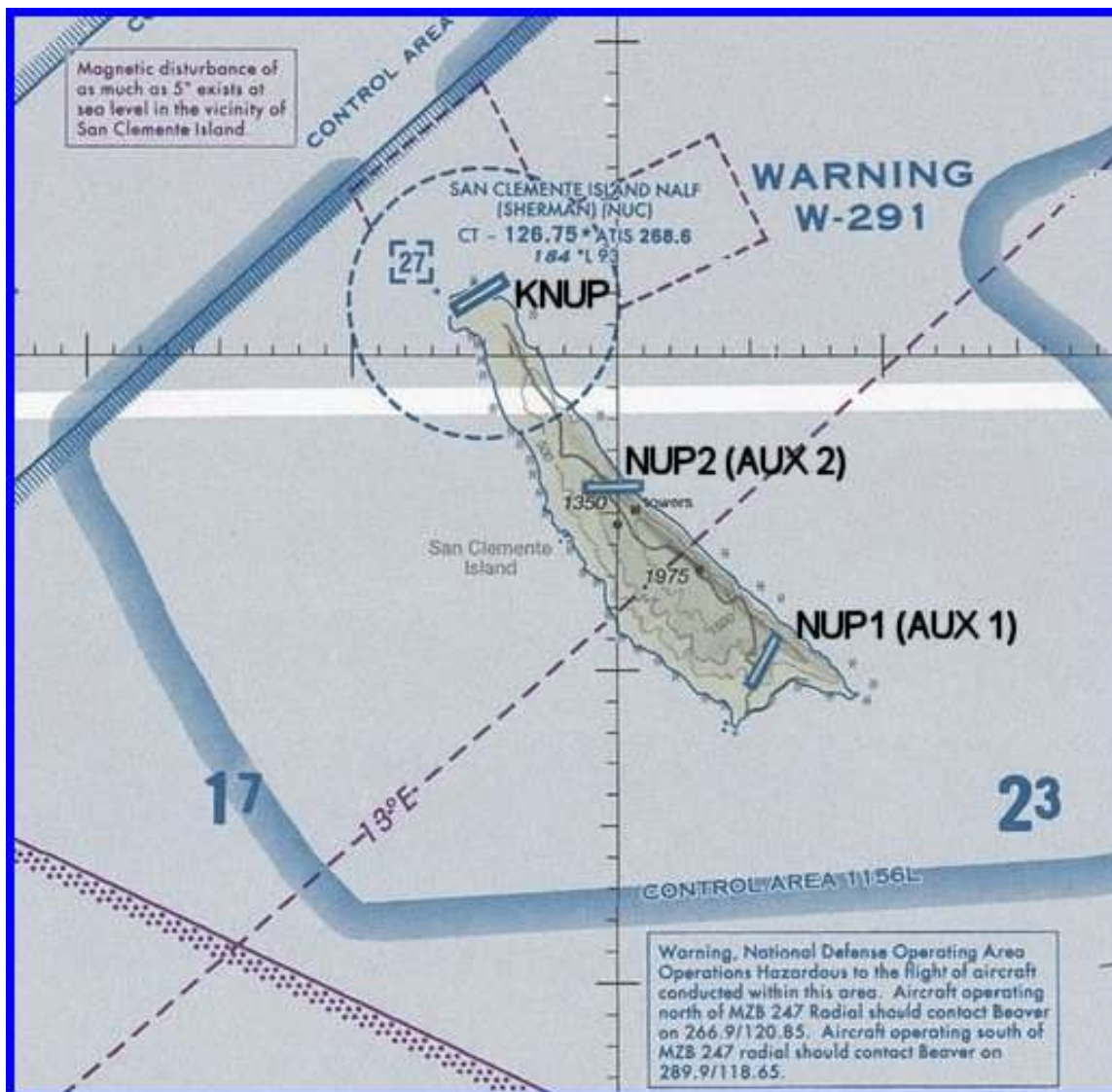
SAN CLEMENTE ISLAND, CALIFORNIA

33°01'N-118°35'W

SAN CLEMENTE ISLAND NALF (KNUC)
(FREDERICK SHERMAN FLD)

HI-TACAN RWY 23

10266



AUX1 (KNU1)



AUX2 (KNU2)



A 1944 aerial view of the old San Clemente NAAS (National Archives photo).